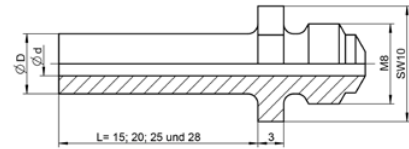


Special nosepieces for blind rivet setting tools

NTS, NTS-K, NTX, NTX-F, Flipper®, SN 1, PH 1-VK, PH 2-VK and PH 1-L

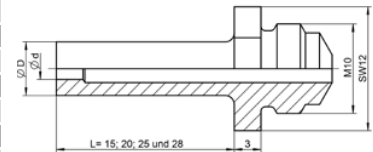
Rivet Ø	Rivet material	Ø d	Ø D	Designation	15 mm	20 mm	25 mm
3 and 3.2	Al, Cu, Steel, Stainless steel, Stinox, Al/Al, PG Al, PG steel	2.4	6.5	10/24 SL...	-	145 6630	145 6632
4	Al, Cu	2.4	6.5	10/24 SL...	-	145 6630	145 6632
4	Steel, CAP® Al, CAP® Cu, Al/Al, PG Al	2.7	7.0	10/27 SL...	145 6634	145 6635	-
4	Stainless steel, Stinox, PG steel	2.9	8.0	10/29 SL...	145 6638	-	-
4.8	CAP® Al, CAP® Cu	2.9	8.0	10/29 SL...	145 6638	-	-
4.8 and 5	Al, PG Al	3.2	8.0	10/32 SL...	145 6641	145 6642	-



CAUTION! BLIND RIVETS MUST BE ORDERED AS A CUSTOM-MADE PRODUCT WITH EXTENDED MANDREL!

SN 2, HN 2, PH 1, PH 2, PH 2-KA, PH-Axial and PH 2000

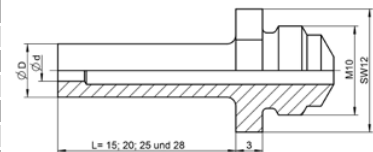
Rivet Ø	Rivet material	Ø d	Ø D	Designation	15 mm	20 mm	25 mm	28 mm
3 and 3.2	Al, Cu, Steel, Stainless steel, Stinox, Al/Al, PG Al, PG steel	2.4	6.0	16/24 SL...	145 6812	145 6813	145 6814	145 6815
4	Al, Cu	2.4	6.0	16/24 SL...	145 6812	145 6813	145 6814	145 6815
4	Steel, PG Al	2.7	8.0	16/27 SL...	145 6816	145 6817	145 6818	145 6819
4	Stainless steel, Stinox, PG steel	3.0	8.0	16/29 SL...	145 6820	145 6821	145 6822	145 6823
4.8 and 5	Al, PG Al	3.0	8.0	16/29 SL...	145 6820	145 6821	145 6822	145 6823
4.8 and 5	Steel	3.35	8.0	16/32 SL...	145 6824	145 6825	145 6826	-
4.8 and 5	Stainless steel, Stinox, PG steel	3.6	10.0	16/36 SL...	145 6828	-	-	-
6	Al	3.6	10.0	16/36 SL...	145 6828	-	-	-
6.4	Al, PG Al	4.0	10.0	16/40 SL...	145 6807	-	-	-
6.4	Steel, Al/Al	4.5	10.0	16/45 SL...	145 6805	145 6806	-	-



CAUTION! BLIND RIVETS MUST BE ORDERED AS A CUSTOM-MADE PRODUCT WITH EXTENDED MANDREL!

AccuBird®, AccuBird® Pro, PowerBird®, PowerBird® Pro Gold Edition and TAURUS®

Rivet Ø	Rivet material	Ø d	Ø D	Designation	15 mm	20 mm	25 mm	28 mm
2.4	Al	1.8	6.0	17/18 SL...	145 7367	145 7368	146 4039	146 4040
3.2	CAP® Al, CAP® copper	1.8	6.0	17/18 SL...	145 7367	145 7368	146 4039	146 4040
3	Al/Cu	2.0	6.0	17/20 SL...	145 7314	145 7305	146 4041	145 7369
3	Al, Cu, Steel, Stainless steel, Stinox, Al/Al	2.2	6.0	17/22 SL...	145 7351	-	145 7349	145 0668
3 and 3.2	Al, Cu, Steel, Stainless steel, Stinox, Al/Al, PG Al, PG steel	2.4	6.0	17/24 SL...	145 7370	145 7371	145 7372	145 7373
4	Al, Cu	2.4	6.0	17/24 SL...	145 7370	145 7371	145 7372	145 7373
4	Steel, PG Al	2.7	8.0	17/27 SL...	145 7374	145 7376	145 7377	143 5035
4	Stainless steel, Stinox, PG steel	3.0	8.0	17/29 SL...	145 7378	145 7379	145 7381	145 7382
4.8 and 5	Al, PG Al	3.0	8.0	17/29 SL...	145 7378	145 7379	145 7381	145 7382
4.8 and 5	Steel	3.35	8.0	17/32 SL...	145 7383	145 7385	145 7386	145 7388
4.8 and 5	Stainless steel, Stinox, PG steel	3.6	10.0	17/36 SL...	145 7390	145 7392	145 7393	145 7394
6	Al/Al	3.6	10.0	17/36 SL...	145 7390	145 7392	145 7393	145 7394
6	Steel	4.0	10.0	17/40 SL...	145 7399	145 7400	145 7401	145 7402
6.4	Al, Stainless steel, PG Al, PG steel and G-Bulb	4.5	10.0	17/45 SL...	145 7265	145 0673	145 7404	145 7398



CAUTION! BLIND RIVETS MUST BE ORDERED AS A CUSTOM-MADE PRODUCT WITH EXTENDED MANDREL!